

# Chronology Card Game

## Teachers' Guidance Notes

### Learning Objectives

- To learn about the significant dates and events that led up to and were a consequence of Pontcysyllte Aqueduct and Canal
- To reinforce understanding of the timeline of the building of the Pontcysyllte Aqueduct and Canal
- To develop chronological understanding and timelines

### Resources

- Set of Date Cards
- Set of Fact Cards

### Instructions for the Game

**This is a matching game to test your knowledge of the timeline of the Pontcysyllte Aqueduct and Canal. It is best done after you have watched the timeline animated film.**

- Take the two stacks of cards, the Date Cards and the Fact Cards, and lay each set out in a row face down on the table.
- Taking it in turns, turn over one Date Card and one Fact Card and try to match the Date and picture with the correct Fact that describes that event. Use the picture to give you a hint. If you picked the wrong Fact, replace both cards back in the same position face down in their row. Try to remember where you put it back for next time round!
- If you picked correctly and you have managed to match the Date Card with the correct Fact Card then place that pair in front of you to score at the end.
- Once all the cards have been picked, the person with the most pairs of cards in front of them is the winner!



### Create a Timeline

Now take all the matched up pairs and put them in order of date, starting with the oldest on the left and the most recent date on the right.

Use the timeline to answer the questions below:

- 1. When was Pontcysyllte Aqueduct first opened?**
- 2. When was Pontcysyllte Aqueduct and Canal made a World Heritage Site?**
- 3. How many years did it take from the investors first meeting to discuss plans for the canal, to the opening of Pontcysyllte Aqueduct?**

Date Card

1760s



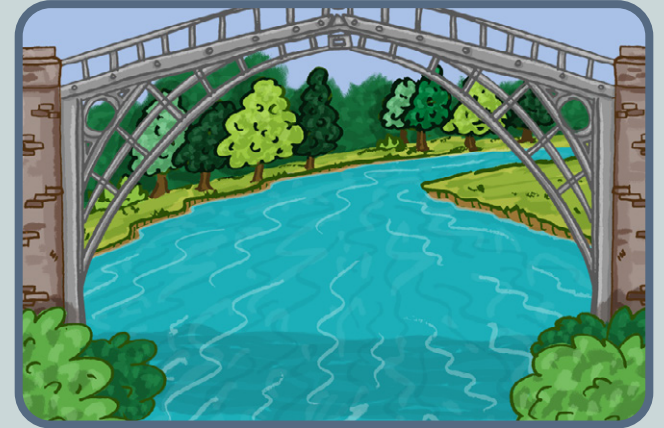
Date Card

1761



Date Card

1779



Date Card

1791



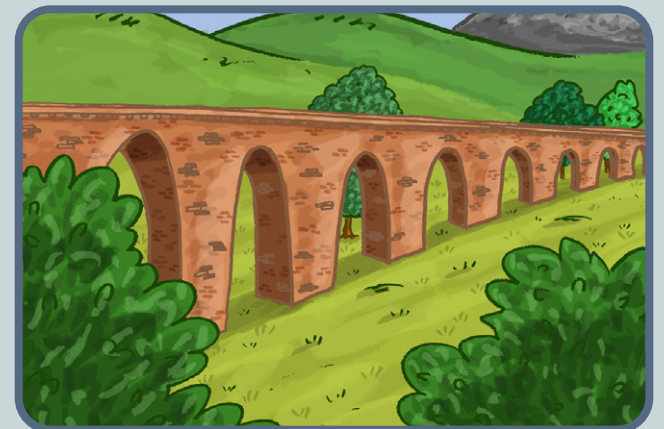
Date Card

1792 and 1793



Date Card

1801





Date Card

1805



Date Card

1860s



Date Card

1880s



Date Card

1950s



Date Card

2009

United Nations  
Educational, Scientific and  
Cultural Organization

• **Pontcysyllte Aqueduct and Canal**  
• inscribed on the World  
Heritage List in 2009

• TRYDADAETH Y BYD • YNDI  
• PATRIMONŷ ANGWYBODAETH

Date Card

Today



### Fact Card

Many canals were being built around the country, dug by teams of navvies.



### Fact Card

The Bridgewater Canal near Manchester was one of the first canals in the UK to be completed.



### Fact Card

The Iron Bridge in Shropshire was built, inspiring engineers to use cast iron for other projects.



### Fact Card

Investors met to discuss plans for a new canal to transport coal from the local mines to the growing industrial towns.



### Fact Card

William Jessop was appointed to oversee the canal building and Thomas Telford joined the team to help him.



### Fact Card

Chirk Aqueduct was built over the River Ceiriog. It was the tallest aqueduct in the world at that time.



Fact Card

The Pontcysyllte Aqueduct was officially opened. It was even taller than Chirk Aqueduct!



Fact Card

Railways were overtaking the use of the canal as trains could move goods faster and cheaper than canal boats.



Fact Card

Victorian tourists were visiting Llangollen in increasing numbers. Pleasure trips on horse-drawn barges began.



Fact Card

Goods were rarely transported by canal but it survived as it supplied drinking water to north-west England.



Fact Card

The Pontcysyllte Aqueduct and Canal was made a World Heritage Site.



Fact Card

People enjoy using the canal and towpath for boating, canoeing, walking and cycling. Wildlife also thrives there.



