

Canal View Chirk Bank - Then and Now Teachers' Guidance Notes

Learning Objectives

- To find out how one terrace of cottages has changed over time
- To understand the reasons why an area changes
- To develop skills including investigation and analysis

Resources

- Mapping PowerPoint
- Fact File
- Set of photographs
- [National Library of Scotland online mapping](#)

Activity Instructions

Learners will use the photo set, online maps and Fact File to investigate how Canal View and the canal side at Chirk Bank has changed over time.



Starter Activity Ideas:



Discuss what evidence there might be for finding out how places have changed.

Look at Mapping PowerPoint 'How has Cefn Mawr Changed over time?' as an introduction to using the National Library of Scotland [online mapping](#).

Further Activity Ideas:



Can you find any old photos of your own house or the area you live in? How has it changed? Think about the number of houses and shops.

Consider your nearest town. What types of shop are there now that might not have been there 100 years ago? Are there any buildings still there today that would have been there 100 years ago? Can you think of any other changes?

Brief for Learners:



- How have Canal View Cottages changed over time? Consider physical changes by comparing the photos to spot any differences. Consider changes of use by reading the Fact File.
- How has the canal side changed? Use the online maps and photo sets to look at changes. Compare the OS six inch, 1888 – 1913 map of Chirk Bank with modern Bing satellite view side by side. Then compare the satellite map with OS 1:25,000 1937-61
- Can you find a building that was there before 1913 but not there today? (refer to the photos of the canal side)
- Can you find any buildings that weren't there before 1913 but are there today?
- Discuss: Why do you think the use of the cottages and canal side has changed?

Canal View Cottages Fact File

Early 1800s

A few years after the canal opened, a **cottage** was built beside the canal and occupied by a **blacksmith**. A **store and warehouse** were built later along with other cottages. Over time the cottages became known as **Canal View**.

Public wharves were built on both sides of the bridge. Here goods, including lots of coal, were transferred between the road and canal. The canal company built a **warehouse and stables** on the canal bank. A **crane** was used to load goods on and off the canal boats.

By **1861** there were three **coal mines** within walking distance. The **census records** show that most of the Canal View residents worked in the mines or related work e.g. blacksmiths were needed to mend and sharpen the miners' picks and shovels. Robert Jones, aged 47, a **coal labourer**, lived with his family of 4 children. William Edwards, aged 36, a **blacksmith**, lived with his wife, 2 daughters and his mother in law. Charles Edwards, a **shopkeeper** and Thomas Evans a **saddler** were also living there.



1870 – 2000

In **1870** a **tramway** was opened to bring the coal from **Quinta colliery** down to a **wharf** built on the southern bank of the canal.

The **1881 census records** show that the mines were still the main source of work.

Edward Jones, aged 27, was running a **grocer's shop** with 2 assistants at Canal View. (This was at what is now No 1 Canal View and was formerly the store and warehouse.)

By **1895** **David Owen Williams** was the **grocer** at Canal View (see photo).

By **1917** **Thomas Morris** ran the shop with a **post office**.

In **1933**, the **warehouse and stables** beside the canal were **demolished**.

In **January 2000**, the **Post Office/shop** closed. The owners were unable to sell it as a shop and so it was converted into a private house. The **post box** that remains gives a clue to its past!





Pontcysyllte
Safle Treftadaeth Y Byd
World Heritage Site



No. 1 Canal View Through Time

Courtesy of Phil Barnett

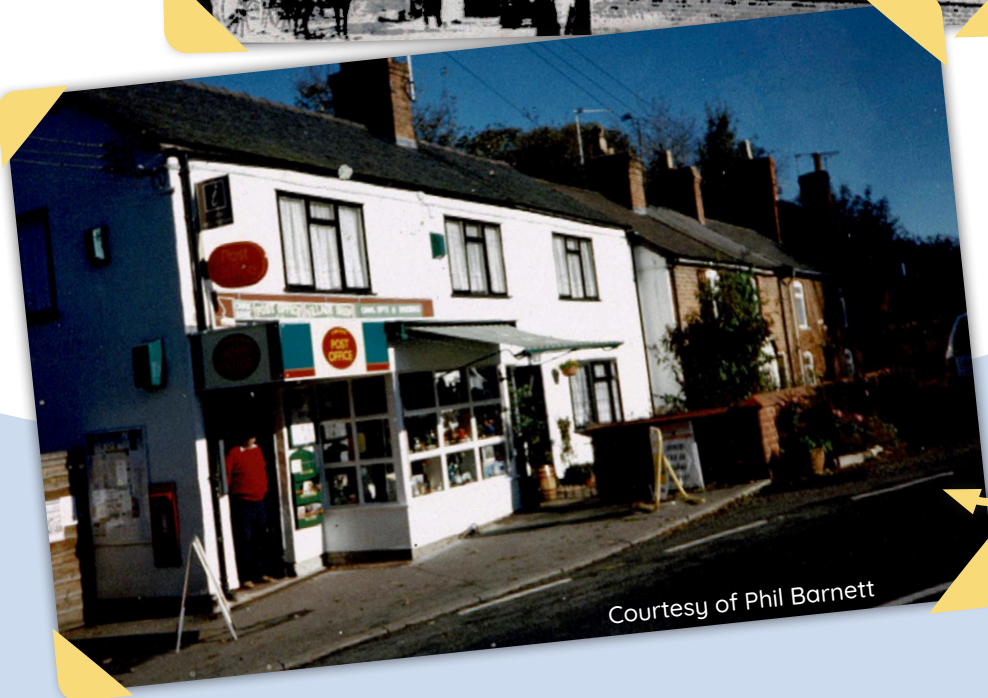


General stores
circa 1890

Modern view



Post Office Canal View 1970s



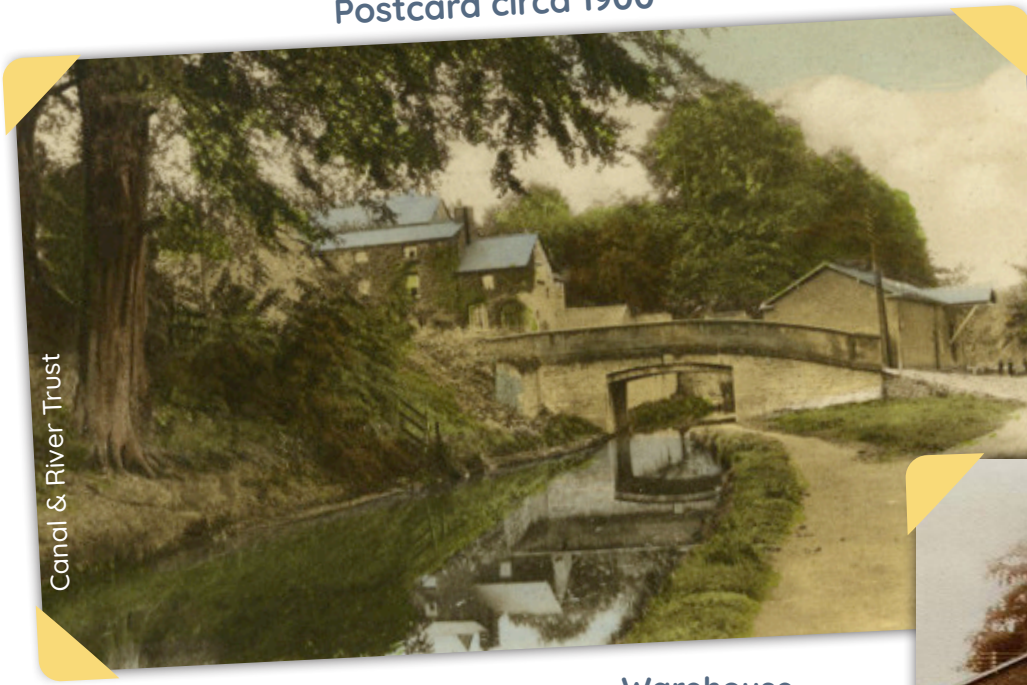
Courtesy of Phil Barnett

Chirk Bank Bridge Through Time

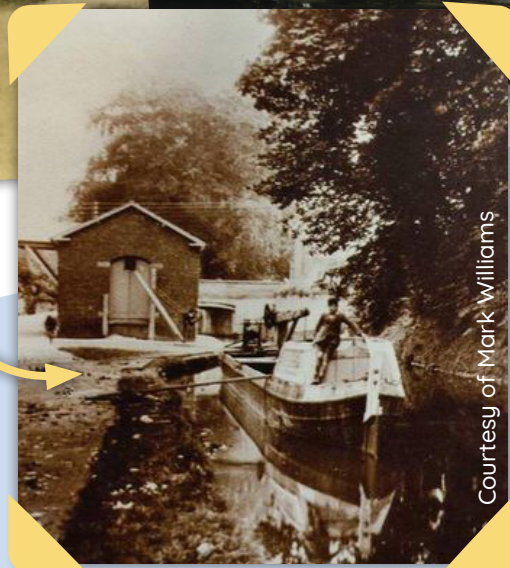
The view today



Postcard circa 1900



Warehouse
early 1900s





Pontcysyllte
Safle Trefadaeth Y Byd
World Heritage Site



OS map 1884 Showing Chirk Bank and Tramway from Quinta Colliery

National Library of Scotland CC-BY-NC-SA



See the map here: maps.nls.uk/view/101593432

www.

