



How has the Area Changed Over Time?

Activity Plan

Learning Objectives

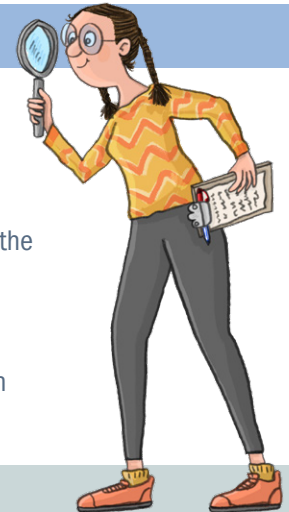
- Understand the chronology of the World Heritage Site and key events in its development
- Discover how the landscape and communities around Pontcysyllte Aqueduct and Canal have changed over time
- Investigate landscape and population change using primary sources
- Develop key skills including investigation, chronology and creative skills

Resources

- Animation: Timeline
- Chronology Card Game: Teachers' Guidance Notes, Date and Fact Cards
- Timeline PDF
- Mapping PowerPoint
- Looking at Population change: Teachers' Guidance Notes, Population Data and Census Sheets
- Canal View Chirk Bank Then and Now
- Landscape Change Collage: Teachers' Guidance notes
- Film: Ladies of Llangollen - Reflecting on Pontcysyllte Aqueduct

Activities

1. Watch the timeline animation to see how the canal and surrounding area developed over time.
2. Play the Chronology Card Game to see how much you have remembered about the timeline.
3. Investigate how Cefn Mawr has changed through time, using the Mapping PowerPoint with the National Library of Scotland online maps.
4. Use historic sources including original census documents and population data to investigate how the population of Pontcysyllte has changed over three different time periods.
5. Compare Chirk Bank Then and Now.
6. Create a collage landscape to illustrate how the landscape has changed over time.
7. Watch the film 'Ladies of Llangollen - Reflecting on Pontcysyllte Aqueduct' to encourage discussion about how the building of the aqueduct and canal was viewed.



Suggestions

Before starting these activities, it would be helpful to look at modern photographs and maps of the Dee Valley and the World Heritage Site to familiarise learners with the landmarks, main place names, proximity to their school and familiar places.

Plenary

The coming of the Pontcysyllte Aqueduct and Canal had a big impact on the landscape and communities of the Dee Valley. The canal enabled raw materials and manufactured goods to be transported cheaply to the growing industrial towns and cities. As a result industries grew creating jobs for local people as well as encouraging immigration to the area. The population grew and industrial towns like Cefn Mawr developed. It continues to have an impact today, an intrinsic part of the beautiful landscape and a draw for tourists.

KS2 Curriculum Links

England	Wales
<ul style="list-style-type: none"> • History • Geography • English • Art and Design 	<ul style="list-style-type: none"> • Humanities • Literacy and Communication • Expressive Arts

Useful Websites/Extra Resources

- pontcysyllte-aqueduct.co.uk
- [Amgueddfa Llangollen Museum](#)